



# Ice Cream and Leisure Brochure 2025

The Ice Cream Specialist



*Family - Owned Since 1987*

**Where Customer Care is  
Our Passion!**





- FREE DELIVERY
- MINIMUM ORDER 6 UNITS
- MONTHLY PROMOTIONS
- GREAT CUSTOMER SERVICE
- BRAND LEADERS
- PRODUCT INNOVATION
- SALES SUPPORT & POS

## How to Order

Call us, email us or order online (24hr, 4pm cut off for next day delivery)

Burgess Hill 01444-870111 or Ashford (Kent) 01233-647355

sales@consortfrozenfoods.co.uk

www.consorffrozenfoods.co.uk

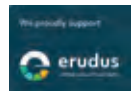
consort.coldweb.co.uk

FOLLOW US ON



## Ways to Pay

- Card payment at time of order
- Cash or Card (zettle) on delivery
- Direct Debit
- Credit Account



Consort is part of the First 4 Frozen distribution network.



Consort Frozen Foods has achieved a AA Grade for the frozen storage & distribution of branded pre-packed Ice Cream and Frozen Food as set out in the BRC Global Standard for Storage and Distribution

\*Due to the current climate our promotions and prices are subject to short notice changes\*

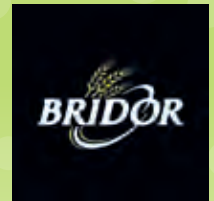


# New to Consort!

## 2025



SCAN ME TO FOLLOW CONSORT



SEE P56



SEE P67



SEE P60







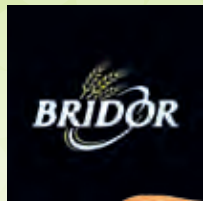
SCAN ME TO FOLLOW CONSORT



SCAN ME TO FOLLOW CONSORT

# New to Consort!

2025



SEE P56



SEE P56



SEE P59



SEE P17



SEE P19



SEE P54



Best-Bake to Go



SEE P67







SCAN ME TO FOLLOW CONSORT

# New to Consort!

2025



SEE P36



SEE P52



SEE P52



SEE P43



SEE P36



SCAN ME TO FOLLOW CONSORT



# NEW IMPULSE LINES FOR 2025!







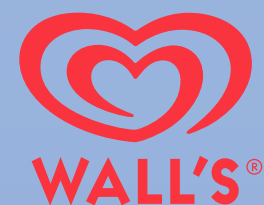
SCAN ME TO FOLLOW CONSORT



SCAN ME TO FOLLOW CONSORT

# IMPULSE

# IMPULSE



Code	Product	Size	RRP
3536	Magnum Classic	20x110ml	£2.30
6765	Magnum White	20x110ml	£2.30
5570	Magnum Almond	20x100ml	£2.30
29291	Magnum Billionaire Gold Caramel	20x85ml	£2.30
5028	Magnum Mint	20x100ml	£2.30
96564	Magnum Euphoria	20x85ml	£2.30
99452	Magnum Double Caramel	20x85ml	£2.30
3395	Magnum White Choc Cookies	20x90ml	£2.30
57145	Magnum VEGAN Almond	*NEW* 20x90ml	£2.30
63298	Magnum Utopia Hazelnut	*NEW* 20x85ml	£2.30
91960	Magnum Utopia Cherry	*NEW* 20x85ml	£2.30



Code	Product	Size	RRP
1156	Calippo Orange	24x105ml	£1.60
95620	Twister	35x80ml	£1.60
6919	Solero Exotic	25x90ml	£1.90
1089	Cornetto Classic	24x120ml	£1.90
9013	Cornetto Strawberry	24x120ml	£1.90
8523	Feast	35x90ml	£1.60
8401	Calippo Cola	24x105ml	£1.60
70949	Cornetto Cookie Choc soft cone	24x140ml	£2.10
97607	Twister Berry-licous	35x80ml	£1.60
8402	Cornetto Mint	24x120ml	£1.90
84353	Cornetto Go	33x110ml	£1.60
21233	Mini Milk Strawberry	44x35ml	£0.90
35855	Mini Milk Vanilla	44x35ml	£0.90
84446	Guuud Raspberry & Yoghurt Lolly	30x80ml	£1.90
88947	Mini Pops (5pk)	20x5pk	£1.90
1183	Solero Berry Bliss Raspberry	*NEW* 25x90ml	£1.90
9040	Haribo Push Up	*NEW* 30x85ml	£2.00
16136	Twister Mallow	*NEW* 35x80ml	£1.60



SCAN ME FOR FREEZER DEALS



Code	Product	Size	RRP
1762	Cadbury Flake Cone	24x125ml	£3.00
35194	Cadbury Dairy Milk Stick	20x90ml	£2.80
92139	Cadbury Crunchie Blast	20x90ml	£2.80
65373	Cadbury Caramel Stick	20x90ml	£2.80
21914	Cadbury Caramilk Stick	24x90ml	£2.80
61434	Cadbury Dairy Milk Mint Stick	*NEW* 20x90ml	£2.80

Code	Product	Size	RRP
1703	Smarties Pop Up	20x85ml	£2.00
77858	Oreo Cookie Sandwich	24x110ml	£2.30
97479	Fruit Pastille Lolly	32x65ml	£1.40
1351	Fab Stick	32x58ml	£1.40
4394	Rowntree Blackcurrant Push Up	24x100ml	£1.40
4611	Oreo Stick	20x100ml	£2.30
8731	Rowntree Orange Push Up	24x100ml	£1.40
78856	Rowntree Watermelon	36x73ml	£1.40
30278	Oreo Mini Bites	12x14	£2.75
6036	Nuii Salted Caramel & Macadamia	20x90ml	£2.80
29102	Nuii Dark Chocolate & Nordic Berry	20x90ml	£2.80
63325	Nuii Indian Coconut & Mango	*NEW* 20x90ml	£2.80
55510	Rowntree Mango	*NEW* 36x70ml	£1.40



## FRONERI







SCAN ME TO FOLLOW CONSORT



SCAN ME TO FOLLOW CONSORT



# IMPULSE

# IMPULSE



Code	Product	Size	RRP
1586	Mars Ice Cream Bar	24x74ml	£2.00
2882	Snickers Ice Cream Bar	24x72ml	£2.00
7721	Bounty Ice Cream Bar	24x66ml	£2.00
59251	Twic Ice Cream Bar	24x50ml	£2.00
82719	Skittles Fruit Ice Cream	25x35ml	£1.65
81099	Starburst Fruit Ice Cream	30x50ml	£1.65
51769	Hubba Bubba Ice Lolly	30x50ml	£1.65
22308	Galaxy Ice Cream Bar	<b>*NEW*</b> 24x54ml	£2.00



Code	Product	Size	RRP
88905	American Cookie Sandwich	24x90ml	£2.00
61710	SidesBon	18x150ml	£2.50
13817	Cookie & Cream Cookie	24x90ml	£2.00
81450	Stracciatella Stick	18x100ml	£2.00
66812	Chocolate & Vanilla Cone	20x125ml	£2.00
14504	Salted Caramel Cone	20x125ml	£2.00



# FERRERO

Code	Product	Size	RRP
28229	Kinder Bueno Cone	20x62g	£2.40
63413	Ferrero Rocher Milk Choc Stick	24x70ml	£2.50
83936	Raffaello Ice Cream Stick	24x70ml	£2.50
62256	Ferrero Rocher White Choc Stick	24x70ml	£2.50
34963	Kinder Bueno White Choc Cone	<b>*NEW*</b> 20x62g	£2.40
88260	Kinder Chocolate Stick	<b>*NEW*</b> 30x55ml	£2.10



Code	Product	Size	RRP
10190	Biscoff Milk Chocolate Stick	28x90ml	£2.40
89079	Biscoff White Chocolate Stick	28x90ml	£2.40







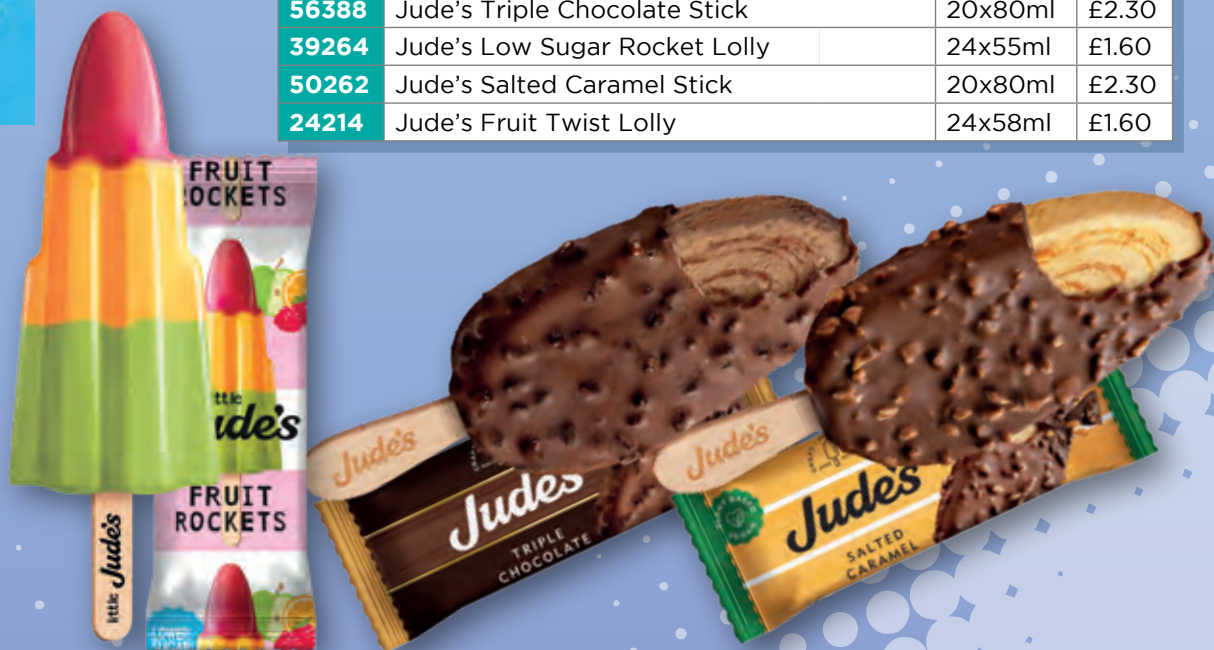
SCAN ME TO FOLLOW CONSORT



# IMPULSE



Code	Product	Size	RRP
57087	Jude's Plant Based Salted Caramel Stick	20x80ml	£2.30
96651	Jude's Plant Based Vanilla Stick	20x80ml	£2.30
56388	Jude's Triple Chocolate Stick	20x80ml	£2.30
39264	Jude's Low Sugar Rocket Lolly	24x55ml	£1.60
50262	Jude's Salted Caramel Stick	20x80ml	£2.30
24214	Jude's Fruit Twist Lolly	24x58ml	£1.60



Code	Product	Size	RRP
5849	Orange Pop	24x110ml	£1.90
4763	Blackcurrant Pop	24x110ml	£1.90
5523	Vanilla Pop	24x110ml	£1.90



In Consort rate of sale order



# 100% PLASTIC FREE COMPOSTABLE PACKAGING!

Scan here for freezers and POS



SCAN ME



Code	Product	Size	RRP
23976	Tropical Squeezer	24x75ml	£1.50
64673	Berry Squeezer	24x75ml	£1.50



In Consort rate of sale order







SCAN ME TO FOLLOW CONSORT



# Vegan & Plant based ICE CREAMS



SCAN ME TO FOLLOW CONSORT



## Rep Ben

First impressions count:

Inviting point of sale is key for your business, ensure you have all your internal and external point of sale early.

Make your site decorative and memorable, this will encourage word of mouth custom and repeat trade.

## Rep Michelle

Maximise your sale in 2025 by stocking the right range for your customer base. Make sure you cater for customers that are plant based or have dietary requirements.

Make sure you choose your range in advance of opening so you can have all your advertising ready.

## Rep Phil

Clean, carry out maintenance checks & switch on your freezer a week in advance of opening, you'll be able to check everything is working and resolve any issues before opening day.

## Rep Karen

Plan your range in advance to ensure the site is fully stocked and ready.

## Rep Julie

Purchase any new equipment for the season well in advance of opening. This will ensure it is delivered, placed and tested before you open.

# Preparing your site for a successful season!

Here are some handy tips from our sales team to help get your business ready for the season.



## Rep Russell

Contact your rep to find out all the new and exciting products that have been added to our range. Consort stock a wide range of complementary products that will add incremental sales and profit for you. Frozen whole cakes and bake in store products to name a few.

## Rep Ricky

Make sure all your allergen information is correct, current & that your staff know where to find the information if needed.

## Telesale Manager - Rob

Cater for Dogs:

If you have an outside space or are near a park, then you should be stocking Dog Ice cream. It's a growing trend to buy Dogs an ice cream while out and about, the revenue increase you will see is well worth the freezer space & make sure you advertise.





SCOOP UP A NEW FLAVOUR FOR 2025



Since 1988, we've been creating delicious ice cream on our family farm in the Cotswolds



Produced sustainably with the best ingredients, we only ever use our own fresh milk in our ice cream



Our ice cream is loved by British families, scooping up lots of awards over the years!



SCAN ME TO FOLLOW CONSORT

# SCOOPING

Code	Product	Size
2721	Birthday Cake	5lt
2114	Blackcurrant In Clotted Cream	5lt
28295	Black Vanilla	5lt
4000	Bubblegum	5lt
60856	Bueno Ripple	*NEW* 5lt
13939	Caramelised Biscuit	5lt
3136	Caramel Fudge In Clotted Cream	5lt
2654	Carribbean Coconut	5lt
4552	Chocoholic Heaven	5lt
7479	Chocolate Fudge Brownie	5lt
6728	Cookie & Cream	5lt
87943	Cookie Dough	5lt
3409	Funky Banana	5lt
3157	Heavenly Honeycomb	5lt
5894	Honey & Stem Ginger	5lt
72105	Midnight Mint Crisp	5lt
6425	Peppermint Chocolate	5lt
87486	Raspberry Ripple	5lt
2965	Rhubarb & Custard	5lt
2086	Rich Clotted Cream	5lt
6529	Rum & Raisin	5lt
4764	Salted Caramel	5lt
2945	Strawberries In Clotted Cream	5lt
5346	Succulent Strawberry	5lt
25335	True Coffee	5lt
69666	Under The Sea	5lt
7849	Vanilla Clotted Cream	5lt
86062	Very Cherry	5lt
1616	White Chocolate & Honeycomb	5lt
86901	Plant Based Chocolate	2x2.4lt
39627	Plant Based Mint	2x2.4lt
87189	Plant Based Salted Caramel	2x2.4lt
46396	Plant Based Strawberry	2x2.4lt
51124	Plant Based Vanilla	2x2.4lt
9035	Blackcurrant Sorbet	2x2.4lt
3261	Lemon Sorbet	2x2.4lt
2147	Mango Sorbet	2x2.4lt
1863	Raspberry Sorbet	2x2.4lt
66356	Strawberry Marc De Champagne Sorbet	2x2.4lt



45 Scoops per Napoli

39 Flavours

5 Sorbet

5 Plant Based or Vegan

TOP SELLERS  
Based on Consorts rate of sale



SCAN ME FOR FREEZER DEALS/POS

\*Scoops per Napoli quoted by manufacturer

			Each
92317	16oz Sundae Lids	1x50	0.06
85661	16oz Sundae Cups	1x50	0.16





1 x 4.5L

## 2025 Scooping Range

### 6 Must Stock Flavours



**Cornish Vanilla**  
Rich and creamy dairy Vanilla ice cream.



**Chocolate**  
Chocolate dairy ice cream with dark chocolate flakes.



**Mint Choc Chip**  
Mint flavoured dairy ice cream with indulgent dark chocolate pieces.



**Salted Caramel**  
Cornish sea salted caramel flavoured dairy ice cream with caramel sauce and salted caramel fudge pieces.



**Strawberry**  
Strawberry dairy ice cream packed with real strawberry pieces.



**Honeycomb Caramel Swirl**  
Dairy ice cream with crunchy honeycomb chunks and swirled with caramel sauce.



**Caramelised Biscuit**  
Caramelised biscuit flavoured dairy ice cream with toffee sauce and caramelised biscuit pieces.



**Candy Floss**  
Candy floss flavoured ice cream with pink sugar crunch pieces.



**Toffee Fudge**  
Toffee flavoured ice cream with dotted fudge pieces and a chocolate ripple.



**Coconut Choc Cookie**  
Coconut flavour ice cream with a chocolate ripple and chocolate flavour cookie pieces.



**Cherry**  
A smooth cherry ice cream, bursting with real cherries.



**Coffee Latte**  
Coffee flavoured dairy ice cream.



**Millionaires Shortbread**  
Shortbread flavoured ice cream with fudge pieces, digestive crumbs and caramel sauce topped with milk chocolate drops.



**Rocky Road**  
Chocolate ice cream with chocolate sauce, digestive biscuit crumb and glace cherry sauce and topped with marshmallows.



**Bubblemum**  
Bubblemum flavoured dairy ice cream topped with pink sugar crunch pieces.



**Cookies & Cream**  
Dairy cream flavoured ice cream with cookie crumble pieces and chocolate sauce.



**Eton Mess**  
Smooth and creamy dairy flavoured ice cream sprinkled with strawberry pieces.



**Mango**  
Mango flavoured dairy ice cream with refreshing mango sauce and white chocolate curls.



**Clotted Cream & British Raspberry Ripple**  
British Raspberry Sauce swirled through creamy ice cream, topped with even more sauce.



**Clotted Cream Vanilla Bean Seed**  
Creamy Vanilla Bean Seed dairy ice cream.



**Lemon Crunch**  
Lemon flavoured ice cream with crunchy lemon pieces swirled with a zesty lemon ripple.



**Blueberry**  
Blueberry flavoured dairy ice cream, with refreshing blueberry sauce and white chocolate pieces.



**Vegan Vanilla**  
Rich and creamy vanilla without the dairy.



**Rum & Raisin**  
Rich and creamy dairy ice cream mixed with real raisins and infused with rum.



SCAN ME TO FOLLOW CONSORT

## SCOOPING

Code	Product	Size
20430	Blueberry	4.5lt
7669	Bubblemum	4.5lt
6307	Candyfloss	4.5lt
91780	Caramelised Biscuit	*NEW* 4.5lt
24224	Cherry	4.5lt
7807	Clotted Vanilla Bean Seed	4.5lt
93182	Coconut Chocolate Cookies	4.5lt
2192	Coffee Latte	4.5lt
3676	Cookie & Cream	4.5lt
8560	Cornish Vanilla	4.5lt
2003	Eton Mess	4.5lt
8699	Honeycomb & Caramel	4.5lt
7426	Lemon Crunch	4.5lt
19457	Mango	4.5lt
59767	Millionaires Shortcake	4.5lt
2126	Mint Chocolate Chip	4.5lt
24625	Raspberry Ripple	4.5lt
7030	Rocky Road	4.5lt
3375	Rum & Raisin	4.5lt
6421	Salted Caramel	4.5lt
9285	Strawberry	4.5lt
9024	Toffee Fudge	4.5lt
2996	Triple Chocolate	4.5lt
47943	VEGAN Vanilla	4.5lt

13003	Oreo Scooping 5lt	1x5ltr
-------	-------------------	--------



35 Scoops per Napoli

24 Flavours

1 Plant Based or Vegan

**TOP SELLERS**  
Based on Consorts rate of sale



We stock Oreo crumb sprinkle too!

\*Scoops per Napoli quoted by manufacturer

For more information please visit our website at [www.consortfrozenfoods.co.uk](http://www.consortfrozenfoods.co.uk)





# CARTE D'OR



Vanilla



Triple Chocolate



Strawberry



Blue Candyfloss



Brownie



Mint Chocolate



Strawberry Cheesecake



Banana Chocolate



Bubblegum Marshmallow



Spagnola / Cherry Swirl



Cookies & Cream



Caramel



Pistachio

**NEW FOR 2025**



**SOLERO**



Raspberry Sorbet

## SCOOPING

Code	Product	Size
9213	Banana split	5.5lt
7240	Blue Candyfloss	5.5lt
9411	Caramel	5.5lt
94425	Cherry Spagnola	5.5lt
4922	Chocolate Brownie	5.5lt
85842	Cookie & Cream	5.5lt
3669	Marshmallow Bubbegum	5.5lt
8179	Mint & Chocolate	5.5lt
5223	Pistachio	5.5lt
77919	Raspberry Sorbet	<b>*NEW*</b> 2x2.4lt
15678	Solero Exotic	<b>*NEW*</b> 5.5lt
3112	Strawberry	5.5lt
3505	Strawberry Cheesecake	5.5lt
2110	Triple Chocolate	5.5lt
1652	Vanilla	5.5lt

CARTE D'OR

**55** Scoops per Napoli

**15** Flavours

**TOP SELLERS**

Based on Consorts rate of sale



SCAN ME FOR FREEZER DEALS/POS

\*Scoops per Napoli quoted by manufacturer



# HACKNEY GELATO

WE'VE WON 66 GREAT TASTE STARS IN JUST 7 YEARS



CHOCOLATE



MADAGASCAN VANILLA



STRAWBERRY



PISTACHIO



SEA SALTED Caramel



CHOCOLATE & ROASTED HAZELNUT



MINT CHOC CHIP



CLOTTED CREAM & STRAWBERRY



DARK CHOCOLATE



RASPBERRY



SICILIAN LEMON



ALPHONSO MANGO



COCONUT



SCAN ME TO FOLLOW CONSORT

## SCOOPING

Code	Product	Size
47680	Dark Chocolate Sorbetto	4.5lt
92588	Pistachio Gelato	4.5lt
10373	Madagascar Vanilla	4.5lt
50461	Coconut Sorbetto	4.5lt
96238	Alphonso Mango Sorbetto	4.5lt
49121	Sea Salt Caramel Gelato	4.5lt
79845	Mint Choc Chip Gelato	4.5lt
93002	Raspberry Sorbetto	4.5lt
97252	Chocolate & Hazelnut Gelato	4.5lt
98191	Clotted Cream Strawberry Gelato	4.5lt
71409	Olive Oil Gelato	4.5lt
98036	Malted Milk	4.5lt
91510	Ginger & Honey	4.5lt
54332	Chocolate Gelato	4.5lt
64903	Lemon Sorbet	4.5lt
53921	Strawberry Gelato	4.5lt

## HACKNEY GELATO

50 Scoops per Napoli

16 Flavours

5 Plant Based or Vegan

PROUDLY MADE IN EAST LONDON

TOP SELLERS

Based on Consorts rate of sale

OUR STOCKISTS INCLUDE

Royal Botanic Gardens **Kew**

HISTORIC ROYAL PALACES



SCAN ME FOR FREEZER DEALS/POS

\*Scoops per Napoli quoted by manufacturer

For more information please visit our website at [www.consortfrozenfoods.co.uk](http://www.consortfrozenfoods.co.uk)



# PURBECK

Award Winning Dorset Ice Cream

Farm made with Purbeck milk, fresh Dorset cream and an abundance of delicious natural flavours.

- ✓ Gluten Free
  - ✓ Egg Free
  - ✓ Nut Free
  - ✓ Colour Free
- All natural ingredients and vegetarian



*“Love Purbeck Ice Cream  
- it's only natural”*

Available in  
125ml Tubs and Scooping



SCAN ME  
TO FOLLOW  
CONSORT

## SCOOPING

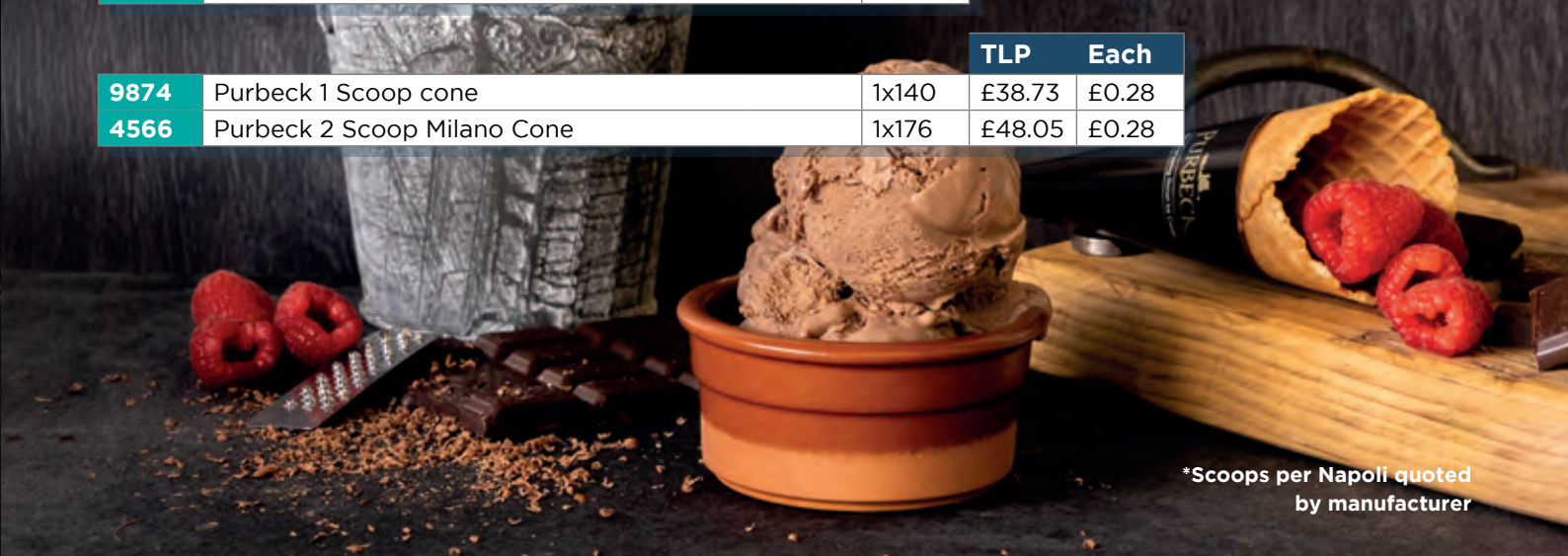
Code	Product	Size
3176	Banoffee	5lt
2909	Berries & Clotted Cream	5lt
24931	Champagne & Strawberry	5lt
81759	Chocolate Caramel Ripple	5lt
14869	Chocolate Orange	5lt
47045	Coconut	5lt
3922	Honeycomb Hash	5lt
28291	Mango & Passionfruit	5lt
2908	Mint Chocolate Baby Chip	5lt
93016	Posh Toffee	5lt
9497	Raspberry Ripple	5lt
94651	Rhubarb & Rosehip	5lt
3721	Rum & Raisin	5lt
5708	Salted Caramel	5lt
6825	Seriously Chocolate	5lt
9033	Strawberry Seduction	5lt
5360	Vanilla Bean	5lt
19306	White Chocolate	5lt
8131	Cappuccino	2.5lt
2517	Clotted Cream	2.5lt
8281	Stem Ginger	2.5lt
20413	Vegan Chocolate & Raspberry	2.5lt
15839	Vegan Vanilla	2.5lt
5743	Mango Sorbet	2.5lt
8232	Raspberry Sorbet	2.5lt
3345	Lemon Sorbet	2.5lt



- ★ 45 Scoops per Napoli
- ★ 26 Flavours
- ★ 3 Sorbet
- ★ 2 Plant Based or Vegan

**TOP SELLERS**  
Based on Consorts rate of sale

		TLP	Each
9874	Purbeck 1 Scoop cone	1x140	£38.73 £0.28
4566	Purbeck 2 Scoop Milano Cone	1x176	£48.05 £0.28



\*Scoops per Napoli quoted by manufacturer





SCAN ME TO FOLLOW CONSORT



# SCOOPING

Code	Product	Size
1522	Caramelita	2x2.4lt
1216	Mint Chocolate	2x2.4lt
1083	Pistachio	2x2.4lt
2203	Strawberry	5lt
3129	Passionfruit & Mango Sorbet	2x2.4lt
7047	Raspberry Sorbet	2x2.4lt
9371	Swiss Chocolate	5lt
9898	Vanilla Dream	5lt



40 Scoops per Napoli

8 Flavours

2 Sorbet

TOP SELLERS

Based on Consorts rate of sale



\*Scoops per Napoli quoted by manufacturer

# MÖVENPICK® Range



VANILLA DREAM

As iconic as our flag, our Vanilla Dream is a Mövenpick classic. We blend Madagascan Bourbon Vanilla with Alpine cream. So good you'll think you're dreaming.

• 5L



SWISS CHOCOLATE

We may be blowing our own Alphon but we believe Swiss Chocolate is the best in the world. Enjoy our dream team of chocolatey creaminess paired with crunchy layers!

• 5L



MINT CHOCOLATE

Alpine cream, crunchy cocoa shavings with a zing of mint make this ice cream as fresh as a morning walk on a Swiss glacier.

• 2.4L



STRAWBERRY

There's only one way to make the best strawberry ice cream. We transform ripe strawberries into the finest puree and pure juice and then mix all this fruity goodness with our best cream.

• 5L



PISTACHIO

We use unroasted pistachios for fresh natural flavour and texture. Pure and how nature intended, just like Switzerland.

• 2.4L



CARAMELITA

Our Caramelita is one-of-a-kind. Creamy caramel ice cream with soft buttery caramel pieces that melt in your mouth. An unsurpassed classic from Mövenpick.

• 2.4L



RASPBERRY SORBET

We love waking up to the fresh mountain air and so do our raspberries. We pick them in the early morning hours when they're at their best.

• 2.4L



PASSION FRUIT & MANGO SORBET

Even exotic fruits love the cold. Sun-ripened passion fruit, loaded with sweet mango pieces.

• 2.4L

## DISCOVER THE MÖVENPICK ICE CREAM EXPERIENCE



"Open a window into the garden of pleasure" Ueli Prager, our founder, believed that natural ingredients would provide pleasurable indulgence. We believe that pure, natural ingredients and Alpine cream can be blended together to create a delicious and premium ice cream experience.



The most important ingredient in ice cream is cream! So we use only the best. Our farmers have small farms which are located in the serenity of the Alps. Our cows are mostly in open stalls and lawns, fed primarily on grass, flowers and herbs.



Our craftsmen explore the world just like our founder by being "open and curious to everything". We experience life to innovate and create with an open-minded and joyful attitude, we dare to think outside the box and embrace new flavours and trends.



Great quality ice cream from Switzerland



Increase margin in your dessert menu



Does not contain palm oil



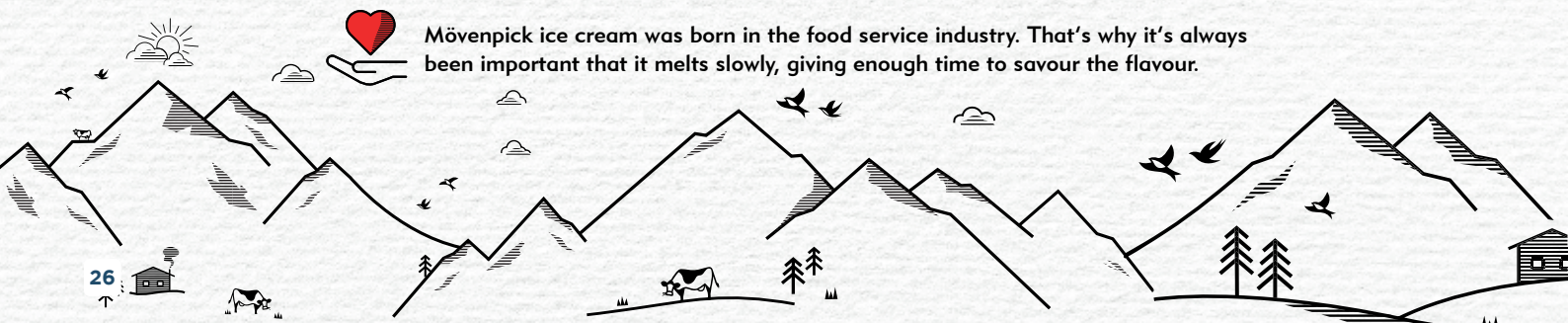
Increase attractiveness in your menu



Quick to prepare, no significant labour cost

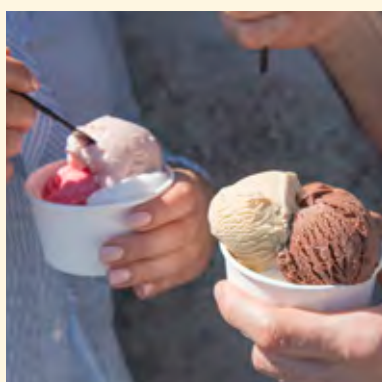
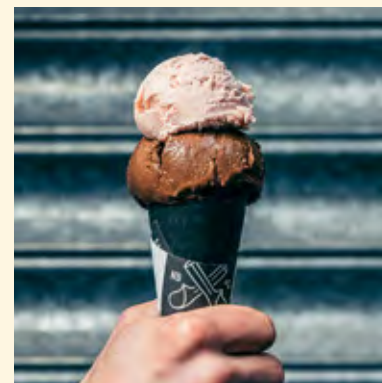
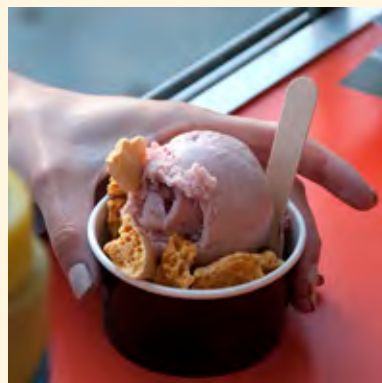
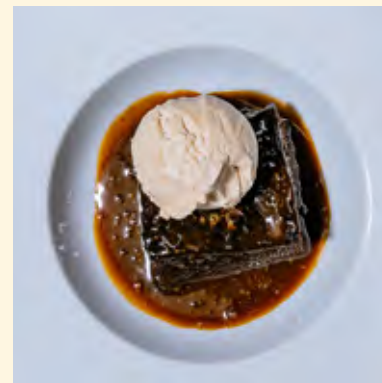


Mövenpick ice cream was born in the food service industry. That's why it's always been important that it melts slowly, giving enough time to savour the flavour.





**ICE CREAM. DONE DIFFERENT. DONE RIGHT.**



**FREEZER DEALS & POS PACKAGES AVAILABLE. TALK TO YOUR CONSORT REP FOR MORE INFO.**

**northern-bloc.com**



# SCOOPING

Code	Product	Size
19888	Dairy Chocolate Caramel Pretzel	5lt
63774	Dairy Chocolate & Sea Salt	5lt
60221	Dairy Clotted Cream & Honeycomb	5lt
70606	Dairy Cookie & Cream	5lt
95363	Dairy Madagascar Bourbon Vanilla	5lt
26718	Dairy Peppermint Chocolate	5lt
36566	Dairy Salted Caramel	5lt
27826	Dairy Strawberry	5lt
52413	Vegan Forest Blackberry Sorbet	5lt
87051	Vegan Lemon Sorbet	5lt
29739	Vegan Mango & Passionfruit Sorbet	5lt
89044	Vegan Raspberry & Sorrel Sorbet	5lt
88035	Vegan Chocolate	2.5lt
46335	Vegan Chocolate Orange	2.5lt
60706	Vegan Rhubarb & Raspberry	2.5lt
93664	Vegan Rum & Raisin	2.5lt
50025	Vegan Salted Caramel	2.5lt
57841	Vegan Vanilla	2.5lt
50025	Vegan Salted Caramel	2.5lt
57841	Vegan Vanilla	2.5lt



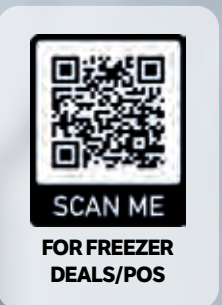
**43** Scoops per Napoli

**20** Flavours

**4** Sorbet

**10** Plant Based or Vegan

**TOP SELLERS**  
Based on Consorts rate of sale



\*Scoops per Napoli quoted by manufacturer



SCAN ME TO FOLLOW CONSORT



For more information please visit our website at [www.consortfrozenfoods.co.uk](http://www.consortfrozenfoods.co.uk)



# MARINE GELATO

SINCE 1931

A TIMELESS TASTE OF ITALIAN TRADITION,  
CRAFTED WITH EXPERTISE AND LOVE.



*"Marine is a true classic. In the summer, expect long queues for the much-loved ice cream favourites - coffee, vanilla with pods and white chocolate are all crowd-pleasers."*

VOGUE

**FREEZER DEALS & POS PACKAGES AVAILABLE. TALK TO YOUR CONSORT REP FOR MORE INFO.**

[marinegelato.com](http://marinegelato.com)



SCAN ME TO FOLLOW CONSORT

## SCOOPING

Code	Product	Size
41336	Chocolate Fudge	5lt
92374	Chocolate with Pieces	5lt
90845	Cookie & Cream	5lt
54015	Ferrari Rocher	5lt
80587	Hazelnut	5lt
87578	Honeycomb	5lt
15909	Mint Chocolate Chip	5lt
30061	Pistachio	5lt
62664	Roasted Coffee	5lt
14860	Rum & Raisin	5lt
72230	Salted Caramel	5lt
40628	Strawberry with Pieces	5lt
89428	Toffee Ripple	5lt
54728	Vanilla with Pod	5lt
98789	White Chocolate	5lt
52461	Lemon Sorbet	5lt
57028	Mango Sorbet	5lt
98789	White Chocolate	5lt
98696	Standard Bubblegum	5lt
48450	Standard Banana	5lt
25816	Standard Chocolate	5lt
35023	Standard Strawberry	5lt
40150	Standard Vanilla	5lt
57028	Mango Sorbet	5lt
52461	Lemon Sorbet	5lt

MARINE GELATO  
SINCE 1931

★ 43 Scoops per Napoli

★ 25 Flavours

★ 2 Sorbet

TOP SELLERS

Based on Consorts rate of sale



SCAN ME FOR FREEZER DEALS/POS

\*Scoops per Napoli quoted by manufacturer





SCAN ME TO FOLLOW CONSORT



SCAN ME TO FOLLOW CONSORT



1Ltr Soft Mix = 12-14 Portions / approx 150 servings per case

Sell 150 servings at £2.50 to make £375 per case

Bulk / Pallet discounts available - Contact your rep

# SOFT MIX

# VEGAN SOFT MIX



**6750**  
Jersey Luxury Dairy  
12x1ltr

Creamy White

- Made with 100% Real Jersey Cream & Milk for superior creamy taste
- Palm Oil Free



**5052**  
Jersey Gold  
12x1ltr

Creamy White

- Made with 100% Real Jersey Milk and Coconut Oil for premium creamy taste
- Palm Oil Free



**52575**  
Oatly Vegan Soft Mix  
6x1ltr

Creamy White

- Certified Vegan
- Palm Oil Free
- Dairy Free
- Nut Free
- Peanut Free
- Kosher
- Halal



**6230**  
Angelito Vanilla Mix  
12x1ltr

Creamy White

**7680**  
Angelito Vanilla Mix  
1x10ltr

- Gluten Free
- No Hydrogenated Fat



**5168**  
Kellys Soft Whip Dairy Mix  
12x1ltr

Rich Yellow

- Made with fresh milk & cream for a rich & creamy flavour

# THICK SHAKE MIX

Use in your slush machine as a great alternative offering!



**41122**  
Jersey Chocolate Mix  
12x1ltr

Rich Brown

- Made with Jersey Milk giving a superior creamy taste and texture
- Creamy chocolate taste with notes of cocoa & dairy



**61188**  
Comelle Mix  
12x1ltr

White

- Made with milk from 100% farm owner dairy cooperative
- A balance of sweetness and tasty vanilla tones



**5548**  
Jersey Thickshake / Milkshake Vanilla Mix  
12x1ltr

- Make the perfect Milkshake / Thickshake & add to smoothie for a creamy finish
- Suitable for Vegetarians
- Palm oil Free
- Nut Free
- Peanut Free

**Figures based on 12oz**

- Cost per portion - 0.49p
- Portions per case - 60
- Suggested RRP - £3.00 Per Case - £180.00



SCAN ME  
CONSORT GUIDE TO CLEANING YOUR SOFT ICE CREAM MACHINE





SCAN ME TO FOLLOW CONSORT



SCAN ME TO FOLLOW CONSORT



# Premium Dipped WAFFLE CONES

**Dipped in Belgian Chocolate**  
.....  
**Popular with Adults & Children**  
.....  
**VAT on these cones**

**Now in NEW & IMPROVED PACKAGING to protect against breakages!**

## Nic.

Add fun & indulgence with these eye catching cones.



**33595**  
Crushed Mini Chocolate Bean Dipped  
1x72  
**£46.99**  
Price Per Cone: £0.65p

1 SCOOP



**93916**  
Salted Caramel Dipped  
1x72  
**£32.37**  
Price Per Cone: £0.45p

1 SCOOP



**86715**  
Bubblegum cone  
1x72  
**£32.37**  
Price Per Cone: £0.45p

1 SCOOP



**58404**  
Sprinkled Dipped  
1x72  
**£32.37**  
Price Per Cone: £0.45p

1 SCOOP





SCAN ME TO FOLLOW CONSORT



SCAN ME TO FOLLOW CONSORT

# WAFFLE CONES & BASKETS



**5755**  
Gelato Medium Waffle Cones  
H:150mm C:70mm

**180**  
**£45.29**  
Price Per Cone: 25p



**2-3**  
SCOOPS

**43854**  
Medium Waffle Cone  
H:150mm C:70mm

**195**  
**£45.97**  
Price Per Cone: 24p



**2-3**  
SCOOPS

**1**  
SCOOP

**6977**  
Gelato Single  
Waffle Cone  
H:160mm C:51mm

**200**  
**£36.59**  
Price Per Cone: 18p



**2-3**  
SCOOPS

**12866**  
Waffle Cone Sleeved  
H:153mm C:58mm

**120**  
**£47.48**  
Price Per Cone: 40p



**2-3**  
SCOOPS

**36834**  
Rainbow Waffle Cone  
H:175mm C:50mm

**160**  
**£58.99**  
Price Per Cone: 37p

## EDIBLE CUPS A great alternative to a cone or Bowl for Ice Creams and desserts

**30157**  
Nic Small Waffle Cup  
H:34mm C:75mm

**240**  
**£55.76**  
Price Per Cone: 23p

**1**  
SCOOP



**14066**  
Nic Medium Waffle Cup  
H:39mm C:80mm

**240**  
**£59.57**  
Price Per Cone: 25p

**2**  
SCOOP



**3**  
SCOOP

**66183**  
Nic Large Waffle Cup  
H:45mm C:93mm

**280**  
**£70.89**  
Price Per Cone: 25p





SCAN ME TO FOLLOW CONSORT



SCAN ME TO FOLLOW CONSORT

# SUGAR CONES



**Used for Scooping or Soft Ice Cream**  
 .....  
**Hygiene Sleeved Cones popular post pandemic**  
 .....  
**No VAT**

**They're not just cones, they're edible holders of happiness!**  
**Our quality cones will elevate your customers experience**

# Nic.



**BEST SELLER**

**1 SCOOP**

**5844**  
 Sleeved Sugar Cone  
 H:122mm C:47mm  
**1x195**  
**£25.37**  
**Price Per Cone: £0.13p**



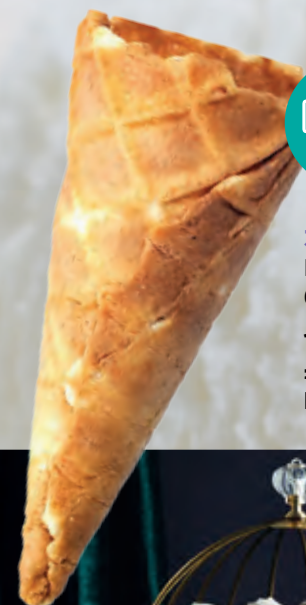
**1 SCOOP**

**1807**  
 NO Sleeve Sugar Cones  
 H:114mm C:47mm  
**1x210**  
**£27.60**  
**Price Per Cone: £0.13p**



**1-2 SCOOPS**

**66917**  
 Super Tall Sugar Con  
 H:192mm C:53mm  
**1x150**  
**£54.87**  
**Price Per Cone: £0.37p**



**MINI SCOOP**

**37640**  
 Mini Waffle cone  
 60mm x C:26mm  
**1x216**  
**£33.54**  
**Price Per Cone: £0.16p**



**1-2 SCOOPS**

**37971**  
 Maxi Sleeved Sugar Cone  
 172mm x C:50mm  
**1x120**  
**£40.87**  
**Price Per Cone: £0.34p**



**1-2 SCOOPS**

**VEGAN**

**65102**  
 Carousel Gluten Free Vegan  
 Cone small packs  
 172mm x C:50mm  
**8x10 packs = 80 Total**  
**£16.88**  
**Price Per Cone: £0.21p**





SCAN ME  
TO FOLLOW  
CONSORT



# WAFER CONES

Nic.

**Sweet and Crispy  
for serving Soft Mix  
Ice Cream**  
.....  
**No VAT**

**64355**  
Traditional Medium (Fiesta)  
H:118mm C:60mm  
**1x360**  
**£17.48**  
Price Per Cone: £0.05p

**20168**  
Traditional Twin Top  
H:134mm W:82mm  
**1x192**  
**£14.63**  
Price Per Cone: £0.08p

**51676**  
Traditional small (Tip Top)  
H:115mm C:54mm  
**1x432**  
**£17.48**  
Price Per Cone: £0.04p



SCAN ME  
TO FOLLOW  
CONSORT



**8833**  
Teddy Bear Topped cone  
H:130mm C:52mm  
**1x175**  
**£14.63**  
Price Per Cone: £0.08p



**65252**  
M/F Edible Eco-Tub  
**1x500**  
**£54.52**  
Price Per tub: £0.11p

\*Bought to order (not held stock)





SCAN ME TO FOLLOW CONSORT



SCAN ME TO FOLLOW CONSORT

# FLAKES AND TOPPINGS

Create next level desserts and ice creams with these big brand topping, sauces & wafers.



**28273**  
Biscoff Topping Sauce  
**1kg**  
**£8.46**



**93572**  
Biscoff Crumb Sprinkle  
**750g**  
**£4.07**

**48465**  
Oreo Crumb Biscuit (With Filling)  
**1x400g**  
**£3.13**



**98253**  
Oreo Crumb Biscuit (No Filling)  
**1x400g**  
**£3.85**



**1408**  
Cadbury 99 Flake Sticks  
**1x144**  
**£21.96**



**6810**  
Rossini Curls  
**1x280**  
**£0.10 per portion**



**90830**  
Florentine Wafers  
**1x200**  
**£0.15 per portion**



**85535**  
Sugar Curls  
**1x280**  
**£0.09 per portion**



**64669**  
San remo Wafers  
**1x200**  
**£0.15 per portion**



Add appeal and profits to your Ice Creams, waffles, desserts and hot drinks!

	<b>£13.98</b>
<b>31213</b> Plain Wafer Discs <b>1x1000</b>	
Portions in a pack	<b>1000</b>
Price per portion	<b>£0.03</b>

	<b>£7.85</b>
<b>90890</b> White Mini Marshmallows <b>1x1kg</b>	
Portions in a pack (15grms)	<b>67</b>
Price per portion	<b>£0.12</b>

	<b>£7.85</b>
<b>6564</b> Coloured Mini Marshmallow <b>1x1kg</b>	
Portions in a pack (15grms)	<b>67</b>
Price per portion	<b>£0.12</b>

	<b>£13.98</b>
<b>7262</b> Salted Caramel pieces <b>1x1kg</b>	
Portions in a pack (15grms)	<b>67</b>
Price per portion	<b>£0.23</b>

	<b>£8.76</b>
<b>4595</b> Honeycomb Sprinkles in Tub <b>1x750g</b>	
Portions in a pack (15grms)	<b>50</b>
Price per portion	<b>£0.18</b>

	<b>£13.76</b>
<b>9133</b> Mini Fudge Cube Caramel <b>1x1kg</b>	
Portions in a pack (15grms)	<b>67</b>
Price per portion	<b>£0.22</b>

	<b>£26.63</b>
<b>12549</b> Vanilla Fudge Fingers <b>1x144</b>	
Portions in a pack (15grms)	<b>144</b>
Price per portion	<b>£0.20</b>

	<b>£14.23</b>
<b>6095</b> Mini Choc Bean Smarties <b>1.25kg</b>	
Portions in a pack (15grms)	<b>85</b>
Price per portion	<b>£0.23</b>

	<b>£18.99</b>
<b>6071</b> Vermicelli 100's & 1000's <b>1x2kg</b>	
Portions in a pack (15grms)	<b>134</b>
Price per portion	<b>£0.15</b>

	<b>£15.01</b>
<b>8627</b> Chocolate 100 & 1000's <b>1x1kg</b>	
Portions in a pack (15grms)	<b>67</b>
Price per portion	<b>£0.15</b>

	<b>£8.44</b>
<b>6511</b> Roasted Nibbed Peanuts <b>1x1kg</b>	
Portions in a pack (15grms)	<b>67</b>
Price per portion	<b>£0.15</b>



**67392**  
Bubblegum Balls  
**1x1kg**  
**£7.93**





SCAN ME TO FOLLOW CONSORT



SCAN ME TO FOLLOW CONSORT

# ICE CREAM SHERBET CRYSTALS

- ★ Make your ice cream pop with colour and flavour
- ★ Sherbets create a crunchy, sweet & tangy shell around the Ice Cream

Code	Product	Size	TLP
43138	Blue Bubbegum Sherbet Crystals	1x3kg	£8.29
97676	Pink Raspberry Sherbet Crystals	1x3kg	£8.29
80471	Orange Sherbet Crystals	1x3kg	£8.29
66361	Lime Sherbet Crystals	1x3kg	£8.29
22186	Lemon sherbet crystals	1x3kg	£8.29

*Funky, Fresh and loved by Kids*



VEGAN

**Average serving = 15g**  
 .....  
**200 servings per bag**  
 .....  
**RSP £0.50**  
 .....  
**£91.71 profit per 3kg bag!**



# PREMIUM SAUCES

**Luxuriously thick consistency - so you use less!**  
 .....  
**9 Best selling flavours**  
 .....  
**Amazing on Ice Cream, Shakes, Waffles & Desserts**

**3397** Strawberry 900ml £11.60

**77542** Raspberry Topping Sauce 1180ml £13.96

**75305** Speculoos 500ml £8.58

**2748** Chocolate 900ml £12.41

**1562** White Chocolate 1.09kg £13.58

**8158** Salted Caramel 900ml £13.29

**7462** Cookie Dough 500ml £6.89

**98156** Nugatti (Nutella) sauce 1000ml £18.47

**5218** Blue Monster 500ml £6.90

**BEST SELLER**

VEGAN

1kg Nondrip nozzle and groove in base to hang and dispense from

Indulgent Quality sauces





SCAN ME TO FOLLOW CONSORT



**DaVinci**  
GOURMET®

**46125** Belgian Choc Drizzle sauce  
**77676** Strawberry Drizzle sauce  
**86328** Raspberry Drizzle sauce  
**97470** Toffee Drizzle sauce

**TOP SELLER**

**£3.29**  
**500ml Bottle**

**IF IT'S NOT *Cadbury***  
**IT'S NOT A *flake 99***

**SERVING SUGGESTION**

CADBURY, FLAKE and 99 are registered trademarks of the Mondelez International Group of companies, used under licence.



SCAN ME TO FOLLOW CONSORT

## ECO TUBS & SPOONS

Sustainable, leak proof sturdy round tubs ideal for serving ice cream and gelato.



**73170**  
VW White IC Tubs 4oz  
Top 75mm, Bottom 62mm, Height 49mm  
**Case = 1,000**  
**£69.99 | 7p Each**



**26192**  
VW Colour IC Tubs 4oz  
Top 75mm, Bottom 62mm, Height 49mm  
**Case = 1,000**  
**£47.68 | 5p Each**



**54940**  
VW White IC Tubs 6oz  
Top 90mm, Bottom 75mm, Height 45mm  
**Case = 1,000**  
**£52.24 | 5p Each**



**39891**  
VW White IC Tub 8oz  
Top 90mm, Bottom 72mm, Height 60mm  
**Case = 1,000**  
**£54.27 | 5p Each**



**87521**  
VW Colour IC Tubs 6oz  
Top 90mm, Bottom 75mm, Height 45mm  
**Case = 1,000**  
**£59.97 | 6p Each**



**22807**  
VW 3.5" Coloured Paper spoons  
**1x2000**  
**£40.13 | 2p each**



**89627**  
VW 3.5" White Paper spoons  
**1x2000**  
**£35.68 | 2p each**



**24298**  
VW 6"x6" Waffle tray  
**Case = 270**  
**£40.17 | 15p each**

For more information please visit our website at [www.consortfrozenfoods.co.uk](http://www.consortfrozenfoods.co.uk)





SCAN ME TO FOLLOW CONSORT

Nic.

# WAX TUBS AND SPOONS

## Disposable Wax Cups

1 SCOOP



**1909**  
NIC Wax Tub **Small**  
100ml / 3.5oz  
**1x100**  
£10.49 | 10p each

Uncoated Biodegradable Tubs

2 SCOOP



**7561**  
NIC Wax Tub **Medium**  
160ml / 5.6oz  
**1x100**  
£11.85 | 12p each

3 SCOOP



**3811**  
NIC Wax Tub **Large**  
280ml / 9.8oz  
**1x100**  
£17.82 | 18p each

**8326**  
Nic reusable Plastic  
Spoons  
**1x1kg**  
£13.49

**81180**  
NIC 3.5"  
Paper spoon  
**1x500**  
£24.49 | 5p each



**13704**  
NIC PLA Screwball  
**1x50**  
£3.98 | 8p each



# fwip®

WANT AN ICE CREAM SOLUTION THAT USES LESS POWER THAN A LIGHT BULB? SOUNDS LIKE A BRIGHT IDEA

## SAY HELLO TO POD BASED GELATO, SORBET & FROZEN YOGURT

Serve delicious award-winning desserts with the Portobello



Scan QR code for more information!



Chocolate Gelato



Vanilla Gelato



Salted Caramel Gelato



Natural Frozen Yogurt



Mango Vegan Sorbet



Strawberry Vegan Sorbet







SCAN ME TO FOLLOW CONSORT



# MOBILE ICE CREAM SHOPS & COFFEE STOPS

Welcome to Your One-Stop Shop for All Things Ice Cream!

Looking to stock up your ice cream van or shop with the coolest, creamiest, most crowd-pleasing treats? You're in the right place! At Consort, we're here to make your business a hit with customers of all ages.

## WHAT WE OFFER:

- ✓ Ice Cream Tubs, Cones & Sticks
- ✓ Vegan & Dairy-Free Options
- ✓ Sundae Toppings, Syrups & Wafers
- ✓ Branded POS Materials & Accessories

## Why Choose Us?

- ★ **Top-Quality Products**  
From timeless classics to trendy, eye-catching flavours, our range is guaranteed to keep your customers coming back for more.
- 🕒 **Quick & Reliable Delivery**  
We know you don't have time to wait, so we ensure your freezers are always stocked and ready.
- £ **Point of sale**  
We have all point of sale available to promote your products.



Ready to get started? Explore our range, place your order, and let's keep your business sweet and successful!



SCAN ME TO FOLLOW CONSORT



# MOBILE ICE CREAM SHOP

Code	Product	Size	RRP
5079	Franco Mr Bubble Lolly	30x70ml	£1.05
6521	Franco Lemonade Lolly	30x70ml	£1.30
1127	Franco Banana lolly	30x70ml	£1.05
1581	Franco Orange Refresher	30x70ml	£1.30
1601	Franco Cola Lolly	30x70ml	£1.05
6087	Franco Cherry Brandy	30x70ml	£1.05
7219	Franco Tasty Orange	30x70ml	£1.05
45198	Franco Sour Rocket	30x70ml	£1.05
6826	Franco Strawberry Split	30x70ml	£1.50
5734	Franco Cider Refresher	30x70ml	£1.30
1879	Franco Mr Snow	42x55ml	£0.90
89380	Franco Squeeze up Mango	24x105ml	£1.75
7021	Franco Raspberry Lolly	30x70ml	£1.05
7987	Franco Sonny Orange	24x105ml	£1.50







SCAN ME TO FOLLOW CONSORT



# MOBILE ICE CREAM SHOP

**13704**  
NIC Screwballs Containers  
1x50  
£3.98 | 8p each



**47259**  
Sundae Lids 8oz  
CASE 1x1000  
£22.42 | 2p each



**73640**  
UNIT 1x50  
£1.33 | 1p each

**ALL AVAILABLE IN FULL CASES**

**73892**  
Sundae Cup 8oz  
CASE 1x1000  
£42.97 | 4p each



**71399**  
UNIT 1x50  
£2.31 | 5p each

Code	Product	Size	RRP
95949	Millions Blackcurrant Push Up	24x110ml	£1.70
7476	Peppa Pig Lolly	30x60ml	£1.10
42644	Chupa Chup Strawberry Push Up	24x110ml	£1.70
52530	Jocker Fruit Twist Lolly	32x80ml	£1.25
66125	Paw Patrol Lolly	30x60ml	£1.00
20822	Wazaa Lolly	24x80ml	£1.25



SCAN ME TO FOLLOW CONSORT

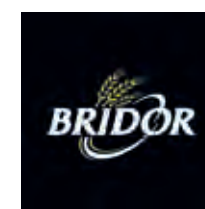


Best-Bake to Go



# BAKES, CAKES, SHAKES AND SO MUCH MORE

Explore our superior range of products that are certain to keep your customers coming back for more.





Best-Bake  
to Go



**NEW LOWER PRICE**  
on Selected lines!



48488  
Bacon Cheese  
Turnover  
40 x 117g  
TLP £38.00

COST  
PER ITEM  
£0.95p

**NEW  
LOWER  
PRICE**



10332  
Cheese &  
Onion Pasty  
24 x 283g  
TLP £32.89

COST  
PER ITEM  
£1.37



60158  
Large 9"  
Sausage Roll  
40 x 165g  
TLP £23.60

COST  
PER ITEM  
£0.59p

**NEW  
LOWER  
PRICE**



13700  
Cornish  
Pasty  
24 x 283g  
TLP £32.89

COST  
PER ITEM  
£1.37



31774  
Cheese &  
Onion Slice  
40 x 150g  
TLP £39.60

COST  
PER ITEM  
£0.99p

**NEW  
LOWER  
PRICE**



41303  
Chicken  
Tikka Slice  
40 x 150g  
TLP £39.60

COST  
PER ITEM  
£0.99p

**NEW  
LOWER  
PRICE**



14752  
Peppered  
Steak Slice  
40 x 150g  
TLP £42.99

COST  
PER ITEM  
£1.07



SCAN ME  
TO FOLLOW  
CONSORT

## SOUR DOUGH PIZZA & TURKISH PIDE

These wood fired sour dough pizzas are amazing as a cook and serve option for Café's and smaller food service outlets with a great profit on return for minimal effort.

Code	Product	Size	Item Price	RRP
47535	Stromboli Pizza (spicy calabrese & Salami)	6x447g	£4.20	£8.50-£10.00
74971	Margherita (roasted tomato & Mozzarella)	6x403g	£4.08	£8.50-£10.00
42912	Fiorentina (Spinach & creamy garlic mushroom)	6x453g	£4.20	£8.50-£10.00
36503	Regina (Prosciutto Ham, Mushroom & Mozzarella)	7x448g	£4.21	£8.50-£10.00



Code	Product	Size	Each	RRP
66106	Pide Margherita	36x150g	£1.19	£3.50-£8.00
45832	Pide Cheese & Garlic	36x150g	£1.19	£3.50-£8.00
71741	Pide Spinach & Mozzarella	36x150g	£1.19	£3.50-£8.00

Turkish pide offer a unique twist on the traditional pizza and are great served as a meal with salad or as a grab and go option in a tray.

**Minimum profit  
on return  
of 50%**



The smell of in-store bakes will have customers floating through your doors





SCAN ME  
TO FOLLOW  
CONSORT



# PAIN AU CHOCOLAT & WAFFLES

58452

Pain au Raisin  
60x110g | £42.57  
£0.71p each



97823  
Almond Croissant  
69x95g | £44.97  
£0.65p each



65471

Eclat Du Terrior Croissant  
60x80g | £34.85  
£0.58p each

34957

Eclat Du Terrior Pain Au Chocolate  
60x80g | £38.67  
£0.64p each

21807

Wafflemeister Classic  
30x90g  
TLP: £19.49  
£0.65 each



57394

Wafflemeister VEGAN Classic  
30x90g  
TLP: £22.48  
£0.75 each



- Biggest recognisable brand in waffles
- Sold Individually as grab & go snacking - RRP £1.30
- Eat hot or cold - Microwave in just 30 seconds
- Shelf life once defrosted 30 days

# Sponge



37855  
Funfetti sponge cake  
14x128g  
£21.49 | £1.54 per slice  
RRP £3.75



53290  
Coffee sponge cake  
14x125g  
£21.25 | £1.54 per slice  
RRP £3.75

# Frozen Sponge Cakes

- Pre-sliced, thaw and serve •
- Store in air-tight containers for freshness •
- Stay fresh for 3-5 Days once thawed •



53982  
Chocolate sponge cake  
14x125g  
£21.25 | £1.54 per slice | RRP £3.75



28271  
Victoria sponge cake  
14x121g  
£20.40 | £1.46 per slice | RRP £3.65



30936  
Lemon drizzle sponge cake  
14x125g  
£20.23 | £1.45 per slice | RRP £3.65



72913  
Red velvet sponge cake  
14x125g  
£22.34 | £1.60 per slice | RRP £3.75



71845  
Carrot sponge cake  
14x125g  
£22.34 | £1.60 per slice | RRP £3.75



20846  
Vegan Chocolate Caramel sponge  
14x125g  
£23.89 | £1.70 per slice | RRP £3.90

**NEED A DIFFERENT FLAVOUR?**  
**Speak to your rep who would love to discuss options.**





Perfectly  
**BAKED**

**OVER 40 YEARS OF EXPERTISE IN BAKING  
COMBINING TRADITIONAL CRAFTSMANSHIP  
WITH A PASSION FOR CARE AND PERFECTION**

**8743 APPLE TART (V)**

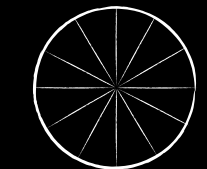
A round tart made with vegan shortcrust pastry and topped with juicy apple slices and flaked almonds..

**HIGH FRUIT CONTENT  
- 46% APPLE FILLING  
AND 28% APPLE SLICES**

**SUITABLE FOR VEGANS**

TLP £19.42

12 PORTIONS - 188g



**Defrost:** At room temperature [21-22°C] for about 9 hours or one slice for approximately 2.5 hours. Alternatively heat up the whole cake at 150°C for approximately 45 minutes and leave to cool.

**15145 BANANA BREAD (V)**

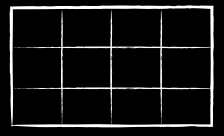
A vegan banana sponge cake dough with walnuts, topped with fruity redcurrants and a mixture of nuts, almonds and oatflakes.

**ADD TO YOUR BREAKFAST OR BRUNCH MENU**

**SUITABLE FOR VEGANS**

TLP £16.00

12 PORTIONS - 96g



**Defrost:** Remove the frozen cake from packaging. In fridge [6-7°C] approximately 8-9 hours. At room temperature [21-22°C] for approximately 4 hours.

**51338 STRAWBERRY CREAM SLICE**

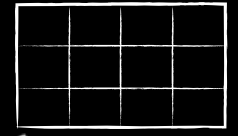
A fluffy cream cheese filling on a gluten-free sponge cake base. Generously topped with glazed strawberries.

**GLUTEN FREE**

**GLUTEN FREE**

TLP £21.08

12 PORTIONS - 171g



**Defrost:** In the refrigerator [6-7°C] for about 12 hours.

**83178 RASPBERRY BROWNIE (GF)**

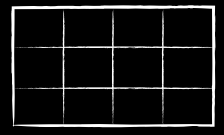
A chewy brownie packed with chocolate and tasty beetroot. Topped with sunflower seeds, pumpkin seeds, hazelnuts and raspberries.

**FRUITY, CRUNCHY AND CHEWY**

**GLUTEN FREE**

TLP £16.00

12 PORTIONS - 88g



**Defrost:** Remove the frozen cake from packaging. In refrigerator [6-7°C]: approximately 6 hours. At room temperature [21-22°C] for approximately 3 hours.

(V) SUITABLE FOR VEGANS (GF) GLUTEN FREE



SCAN ME TO FOLLOW CONSORT

## BRIMBLES AND SYRUPS

Shake it up with Brimble!  
Top quality ice cream, perfect for mailkshakes.



**7415**  
Brimbles Chocolate  
1x4lt | £5.36



**5676**  
Brimbles Strawberry  
1x4lt | £5.10



**9904**  
Brimbles Vanilla  
1x4lt | £4.87

**DaVinci GOURMET®**

**1 Litre Bottle £7.29**

**Hot Drink & Coffee Syrup**

**87186** Caramel Syrup  
**34048** Hazelnut Syrup  
**96464** Vanilla Syrup



For more information please visit our website at [www.consortfrozenfoods.co.uk](http://www.consortfrozenfoods.co.uk)





## Jersey Dairy's Premium Drinks Range

Introducing Jersey Dairy's premium drink range for 2025! Perfect for serving from a chilled dispenser or direct from the carton. Both are delicious served over ice or blend with ice to create a creamy frozen beverage.

- Brilliant for the 'out of home' market in cafés, restaurants & leisure sites.
- Both products are made on the Island of Jersey using 100% Jersey milk which is naturally rich and creamy.
- UHT products with ambient storage - 12 month shelf life from production.



**SIMPLY POUR  
OVER ICE  
AND SERVE!**



**SIMPLY POUR  
OVER ICE  
AND SERVE!**

### Jersey Dairy Iced Coffee

Jersey Dairy's Iced Coffee blends 100% Arabica coffee with creamy Jersey Dairy milk for the perfect balance of bold flavour and smooth texture. Enjoy chilled, served over ice or blended.

TLP £31.46 per case (12x1lt)  
16oz Cup - 150ml serving with Ice & Cream - 40 servings  
RRP £3.50  
Cash profit per case £108.54

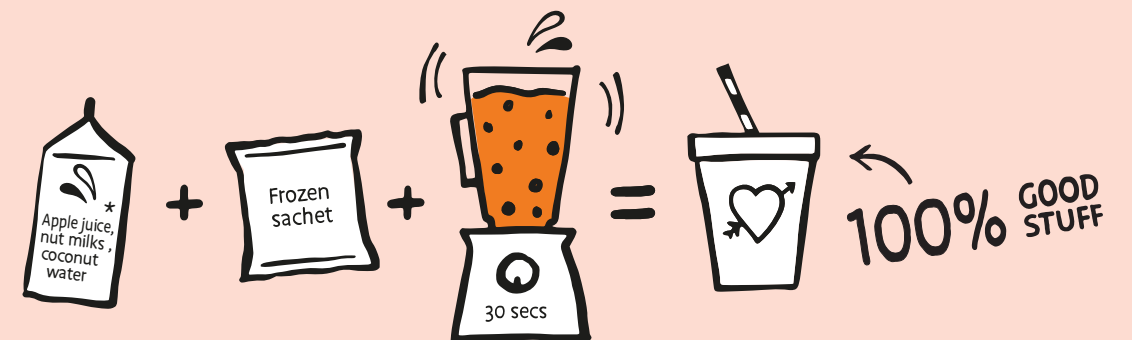
### Jersey Dairy Chocolate Milk

Jersey Dairy's Chocolate Milk features luxurious Belgian chocolate blended with velvety, premium Jersey Dairy milk. Enjoy chilled and served over ice.

TLP £30.94 per case (12x1lt)  
16oz Cup - 150ml serving with Ice & Cream - 40 servings  
RRP £3.50  
Cash profit per case £109.06



<b>PASH 'N' SHOOT</b>	67675	<b>BLUEBERRY THRILL</b>	11642
<b>BERRY-GO-ROUND</b>	49679	<b>SPINACH TO WIN IT</b>	72086
<b>CHERRY POPPINS</b>	26859	<b>KALE KICK</b>	87193
<b>STRAWBERRY SPLIT</b>	62369	<b>WILD WEST ZEST</b>	31825
<b>BIG 5</b>	20023	<b>DETOX ZING</b>	72244
<b>COCO LOCO</b>	72329	<b>AVO GO GO</b>	33208
<b>MIXED FRUIT SMOOTHIES</b>	13238	<b>OAT OF THIS WORLD</b>	20417

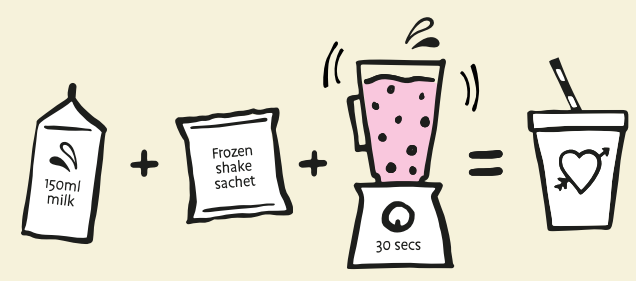






# JOY IN EVERY SIP

- STRAWBERRY GLORY** | 10731
- VA VA VANILLA** | 61347
- LIVIV LA VIDA COCOA** | 27645
- TOP BANANA** | 15716
- LOVE STRUCK PAPER 12OZ CUPS** | 64875
- LOVE STRUCK PAPER LIDS** | 89069



# SMOOTHIES CUPS

**Sustainable solution for Slush, Shake and Cold drinks**

.....

**20oz can be used as pint cups - Great for festivals, parties and other events**



**25696**  
7oz PLA Cup  
**Sleeve 1x50**  
**£3.52**  
**£0.07p each**



**97048**  
12oz PLA Cup  
**Sleeve 1x50**  
**£6.15**  
**£0.12p each**



**19119**  
20oz PLA Cup  
**Sleeve 1x50**  
**£8.31**  
**£0.17p each**



**17306**  
12oz PLA Cold cup Domed Lid  
**Case 1x1000 | £36.15 | £0.04p each**

**63028**  
**Sleeve 1x50 | £2.20 | £0.04p each**



**20x215g**

# Soups

**100% GOOD STUFF**





**88772**  
L/S SOUP Cauliflower Power



**60757**  
L/S SOUP Three Amigo's





**33463**  
L/S SOUP Give Peas a Chance



**19606**  
L/S Soup Killer Tomato



**37616**  
L/S SOUP Mixed box



# Slush

Delight your customers and boost your sales!



**£1799**  
+VAT

### M17.5X2

2 x 7.5L barrel machine  
W 420mm, D 380mm, H 705mm - Weight 38kg

**Free stock with every machine worth £2400!**

#### Slush Syrups

- 4 x Blue Raspberry
- 3 x Strawberry
- 1 x Sour Apple
- 1 x Pink Bubblegum
- 2 x Lemon & Lime
- 2 x Orange

#### Sundry Items

- 800 x 10oz cups
- 500 x 12oz cups
- 1300 Straws
- 2 x mixing bottles
- 2 x Posters



**£2199**  
+VAT

### ST12x2

2 x 12L barrel machine  
W 395mm, D 468mm, H 897mm - Weight 51kg



**£2399**  
+VAT

**NEW IMPROVED PRICE!**

### ST12x3

3 x 12L barrel machine  
W 598mm, D 468mm, H 897mm - Weight 75kg

12 months Parts and Labour Warranty Included

Extended 2/3 Yr Maintenance/Warranty available (\*Fee)

Annual Cleaning Service Package available (\*Fee)

## WE SELL SLUSH!

5 litres of slush will make 110 x 10oz portions or 96 - 12oz portions.

At £1.80 that is £180 in your till!



SCAN ME TO FOLLOW CONSORT

**NEW!**

**77338**  
Neutral Slush  
1x5lt  
**£16.99**

**6236**  
Blue Raspberry Syrup  
1x5lt  
**£16.99**

**1835**  
Strawberry Syrup  
1x5lt  
**£16.99**

**4918**  
Sour Apple Syrup  
1x5lt  
**£16.99**

**3446**  
Orange Syrup  
1x5lt  
**£16.99**

**5155**  
Pink Bubblegum Syrup  
1x5lt  
**£16.99**

**4244**  
Lemon & Lime Syrup  
1x5lt  
**£16.99**

Slush Mix is Vegan, Vegetarian, Gluten and Dairy Free

**GIVE YOUR CUSTOMERS ENDLESS FLAVOUR COMBINATIONS USING NEUTRAL SLUSH AND FLAVOURED SYRUPS!**

Our range is PET - not single use plastic, its 100% recyclable, strong clear lightweight and made to be remade!

Use a base cup price for the neutral slush then change extra per shot of flavour.

Code	Cups	Quantities	Price	Each
37253	10oz - 78mm (295ml)	Sleeve 1x50	£2.65	5p
45692	12oz - 98mm (355ml)	Sleeve 1x50	£3.56	7p
70078	16oz - 98mm (473ml)	Sleeve 1x50	£3.71	7p

Also Available in full cases of 1x1000

Code	Lid - Dome with hole	Quantities	Price	Each
19363	10oz - 78mm	Sleeve 1x50	£1.32	3p
94730	12oz & 16oz - 98mm	Sleeve 1x50	£1.98	4p

Also Available in full cases of 1x1000

Code	Lid - Flat with hole	Quantities	Price	Each
37506	10oz - 78mm	Sleeve 1x50	£1.09	2p
77091	12oz & 16oz - 98mm	Sleeve 1x50	£1.54	3p

Also Available in full cases of 1x1000

Code	Paper Straws	Quantities	Price	Each
66060	Paper Red & White stripe 8mm	Case 8000	£99.29	1p
53868		Unit 200	£2.54	1p
69482	Individually wrapped straws 8mm	Case 1000	£48.57	5p
12365		Unit 100	£4.86	5p

Prices may change due to the volatility of shipping prices in 2024

\*Average Cost of Cup, Lid & Straw set 10p

For more information please visit our website at [www.consortfrozenfoods.co.uk](http://www.consortfrozenfoods.co.uk)





SCAN ME TO FOLLOW CONSORT



# A guide to compostable packaging & waste

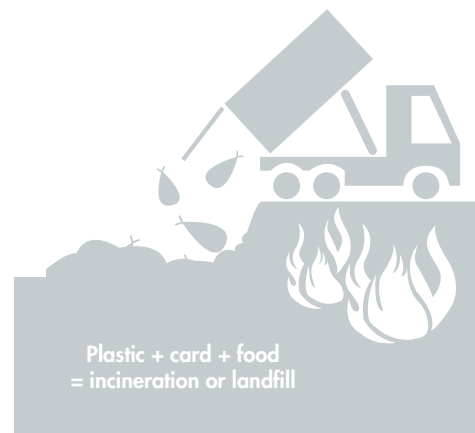
Going plastic-free and keen to understand more about waste? Cut the confusion with this handy guide by Vegware, the global specialist in plant-based compostable foodservice packaging.

## Recyclable

Everyone likes the word 'recyclable' but in reality, conventional foodservice packaging can't be recycled.

Kept separate, dry card or paper can be recycled. So can plastic water bottles or metal drink cans. But used catering disposables are a mix of card, plastic and food, so food contamination is inevitable. This combination creates massive recycling challenges, so the result is often incineration or landfill.

With compostable disposables, food isn't contamination, it's a vital ingredient in the composting process.



Plastic + card + food = incineration or landfill

## Biodegradable

Biodegradable means something breaks down naturally, but it can take years. Biodegradable tells us nothing about timescales – for example, wood is biodegradable, but a log cabin can stand for generations.

When it comes to biodegradable, there is no guarantee it will break down in commercial composting.



Plant-based compostables + food = compost to feed our soil

## Compostable = biodegradable, in under 12 weeks!

Compostable means something can break down in under 12 weeks, and is therefore suitable for commercial composting together with food waste.

Commercial composting creates the perfect balance of microbes, moisture and warmth. So instead of being buried or burnt, your compostable catering 'waste' creates nutrient-rich compost that helps plants thrive.

# COFFEE CUPS

8oz coloured Double Walled Hot Cup

<b>74776</b>	<b>63377</b>
<b>Case = 500</b>	<b>Unit = 25</b>
<b>£35.17</b>	<b>£1.77</b>
<b>7p each</b>	<b>7p each</b>

12oz coloured Double Walled Hot Cup

<b>80981</b>	<b>76465</b>
<b>Case = 500</b>	<b>Unit = 25</b>
<b>£40.57</b>	<b>£2.04</b>
<b>8p each</b>	<b>8p each</b>

16oz coloured Double Walled Hot Cup

<b>24031</b>	<b>86749</b>
<b>Case = 500</b>	<b>Unit = 25</b>
<b>£43.37</b>	<b>£2.72</b>
<b>11p each</b>	<b>11p each</b>



12oz Black Double Walled Hot Cup

<b>33220</b>	<b>22609</b>
<b>Case = 500</b>	<b>Unit = 25</b>
<b>£42.62</b>	<b>£2.15</b>
<b>9p each</b>	<b>9p each</b>



12oz Black Sip Hot Cup Lid

<b>13016</b>	<b>21154</b>
<b>Case = 1000</b>	<b>Unit = 50</b>
<b>£47.54</b>	<b>£2.38</b>
<b>5p each</b>	<b>5p each</b>





SCAN ME TO FOLLOW CONSORT



SCAN ME TO FOLLOW CONSORT

# HOT CUPS

# CHRISTMAS CUPS *Winter Range*



**39895**  
Case = 500  
£37.33  
7p each

**17422**  
Unit = 25  
£2.14  
9p each

**53174**  
Case = 500  
£41.60  
8p each

**51379**  
Unit = 25  
£2.47  
10p each

**90216**  
Case = 400  
£48.22  
12p each

**18685**  
Unit = 20  
£3.05  
15p each



**77471**  
Case = 500  
£51.29  
10p each

**49919**  
Unit = 25  
£2.90  
12p each

**84014**  
Case = 500  
£43.69  
9p each

**75046**  
Unit = 25  
£2.25  
9p each

**65075**  
Case = 400  
£45.21  
11p each

**84320**  
Unit = 25  
£2.35  
12p each

8oz Hot Cup Lid

**20278**  
1x1000  
£30.58 | 3p each

**72935**  
1x50  
£1.87 | 4p each

12oz/16oz Hot Lid

**45760**  
1x1000  
£32.04 | 3p each

**17387**  
1x50  
£2.71 | 5p each



**83651**  
12oz/16oz Hot Cup Clutch  
1x1000  
£38.64 | 4p each



**83418**  
5.5" Wooden Stirrers  
1x10,000  
££24.88 | >1p each



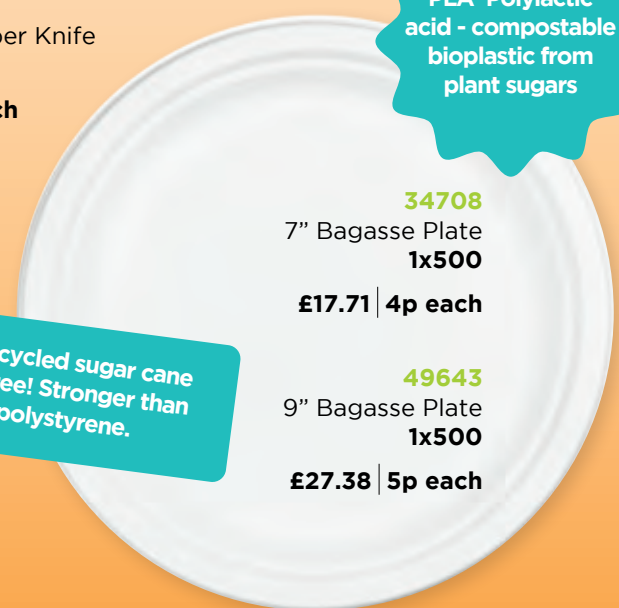
**41842**  
Paper Teaspoon  
1x1000  
£16.14 | 2p each



**49523**  
6.2" White Paper Fork  
1x1000  
£25.87 | 3p each

**83789**  
6.2" White Paper Knife  
1x1000  
£25.87 | 3p each

Bagasse is recycled sugar cane fibre - Tree-free! Stronger than paper & polystyrene.



**34708**  
7" Bagasse Plate  
1x500  
£17.71 | 4p each

**49643**  
9" Bagasse Plate  
1x500  
£27.38 | 5p each

PLA Polylactic acid - compostable bioplastic from plant sugars





SCAN ME  
TO FOLLOW  
CONSORT



SCAN ME  
TO FOLLOW  
CONSORT

## ECO FOOD BOXES & TRAYS

## ECO DESSERT TRAYS & POTS

**73580**  
9" x 6" Large clamshell  
1x200  
£23.97 | 12p each



**61055**  
7" x 5" Medium Clamshell  
1x500  
£40.74 | 8p each



**62411**  
6" Burger / Chip Box  
1x500  
£43.27 | 9p each



**62974**  
9" x 6" Large 2 Compartment  
Clamshell  
1x200  
£27.41 | 14p each

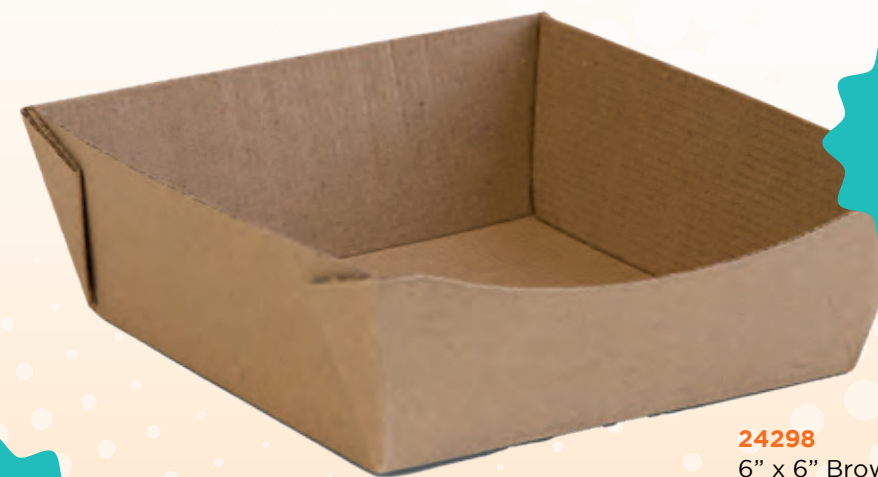


Perfect for  
Waffles, Churros,  
Donuts, chips and  
other treats with  
sauces

**43287**  
12oz Dipping tray  
1x600  
£52.39 | 9p each



**77707**  
7" x 5" Food Tray  
1x500  
£28.99 | 6p each



Ideal for hot  
waffles and  
desserts

**24298**  
6" x 6" Brown Waffle Tray  
1x270  
£40.17 | 15p each

Ideal for  
Breakfasts,  
salad and so  
much more



**58987**  
12oz Round PLA Round  
Deli Container  
1x500  
£66.25 | 13p each

Ideal for  
Breakfasts,  
salad, crumbles  
and so much  
more



**55758**  
16oz Round PLA Round  
Deli Container  
1x500  
£77.27 | 15p each





SCAN ME TO FOLLOW CONSORT



# LIGHTS, CAMERA, ICE CREAM!

*Our range of Ice Cream tubs is worth applauding*

## Add to the experience

- ★ A vibrant selection of traditional and modern flavours curated for Theatres, Playhouses, Art centres and Cinemas.
- ★ We proudly supply local independent and chains, offering bespoke packages with market brand leaders.
- ★ Collaborate with us to elevate your patrons engagement tailored to both front & back of house solutions.
- ★ Vegan & plant based products catering to evolving tastes of today's audiences.
- ★ Flexible delivery options tailored for peak times ie Panto.



SCAN ME TO FOLLOW CONSORT



## MINI TUBS



Here's fantastic range of easy grab & go mini tubs. Perfect for Cafes, Cinemas, Farmshops, Restaurants, Takeaways & Theatres.

Code	Product	Size	TLP	RRP
5060	Clotted Cream Vanilla	12x125ml	£14.16	£2.10
5304	Chocoholic heaven	12x125ml	£14.16	£2.10
3000	Strawberries in clotted cream	12x125ml	£14.16	£2.10
3666	Mint chocolate chip	12x125ml	£14.16	£2.10
4685	Salted caramel	12x125ml	£14.16	£2.10
5194	Heavenly Honeycomb	12x125ml	£14.16	£2.10
78828	PLANT BASED Vanilla	12x125ml	£14.16	£2.10
70336	PLANT BASED Salted Caramel	12x125ml	£14.16	£2.10
6531	Lemon Sorbet	12x125ml	£14.16	£2.10
1563	Blackcurrant in clotted cream	12x125ml	£14.16	£2.10
4739	Honey & Ginger	12x125ml	£14.16	£2.10
15154	Strawberry & Champagne Sorbet	12x125ml	£14.16	£2.10



- ★ 12 Flavours
- ★ 2 Sorbets
- ★ 2 Plant Based



- ★ 11 Flavours
- ★ 2 Sorbets
- ★ 1 Plant Based

Code	Product	Size	TLP	RRP
88880	Gold Medal Vanilla	18x130ml	£18.54	£3.10
72043	Salted Caramel	18x130ml	£18.54	£3.10
43790	Dairy Chocolate	18x130ml	£18.54	£3.10
31737	Mint Chocolate Chip	18x130ml	£18.54	£3.10
25282	Strawberry with pieces	18x130ml	£18.54	£3.10
90963	Stem Ginger	18x130ml	£18.54	£3.10
15358	Mango Sorbet	18x130ml	£18.54	£3.10
47622	Clotted Cream Honeycomb	18x130ml	£18.54	£3.10
85314	Vegan Vanilla	18x130ml	£18.54	£3.10
52399	Roasted Coffee	18x130ml	£18.54	£3.10
23747	Lemon Sorbet	18x130ml	£18.54	£3.10





SCAN ME  
TO FOLLOW  
CONSORT

# MINI TUBS



Code	Product	Size	TLP	RRP
67617	Eco Luxury Vanilla	24x140ml	£19.50	£2.30
77772	Eco Indulgent Chocolate	24x140ml	£20.60	£2.30
34717	Eco Cookies & Cream	24x140ml	£20.60	£2.30
48573	Eco Mango Sorbet	24x140ml	£20.60	£2.30
86497	Eco Salted Caramel	24x140ml	£20.60	£2.30
73834	Eco Strawberry & Cream	24x140ml	£20.60	£2.30
27320	Eco Mint Chocolate Chip	24x140ml	£20.60	£2.30
62372	Eco Honey & Ginger	24x140ml	£20.60	£2.30
75216	Eco Vegan Vanilla	24x140ml	£24.00	£2.30
78630	Eco Lemon Meringue	24x140ml	£20.60	£2.30
16236	Eco Caramelised Biscuit	24x140ml	£20.60	£2.30
72976	Eco Honeycomb	24x140ml	£20.60	£2.30

**BEECHDEAN**  
Farmhouse  
Dairy Ice Cream  
Made from fresh Jersey milk  
and rich double cream

12 Flavours

1 Sorbets

1 Plant Based



Award Winning Dorset Ice Cream

13 Flavours

1 Sorbets

1 Plant Based

Code	Product	Size	TLP	RRP
8050	Salted Caramel	18x125ml	£24.49	£2.55
7206	Mint Chocolate Chip	18x125ml	£24.49	£2.55
1747	Vanilla Bean	18x125ml	£24.49	£2.55
4330	Seriously Chocolate	18x125ml	£24.49	£2.55
4784	Strawberry	18x125ml	£24.49	£2.55
2974	Dig-A-Saurus	18x125ml	£24.49	£2.55
61450	Raspberry Sorbet	18x125ml	£24.49	£2.55
4284	Clotted Cream	18x125ml	£24.49	£2.55
9451	Honeycomb	18x125ml	£24.49	£2.55
8198	Skull-Diggery	18x125ml	£24.49	£2.55
69605	Rum & Raisin	18x125ml	£24.49	£2.55
59802	Vegan Chocolate & Raspberry	18x125ml	£29.51	£2.85
78788	Passion fruit & Mango	18x125ml	£24.49	£2.55



# MINI TUBS



Code	Product	Size	TLP	RRP
82447	Madagascar Vanilla Gelato	12x100ml	£16.99	£2.75
60573	Pistachio Gelato	12x100ml	£16.99	£2.75
93984	Salted Caramel Gelato	12x100ml	£16.99	£2.75
14663	Plant Based Dark Chocolate Sorbetto	12x100ml	£16.99	£2.75
20242	Raspberry Sorbetto	12x100ml	£16.99	£2.75
49274	Alphonso Mango Sorbetto	12x100ml	£16.99	£2.75

**HACKNEY  
GELATO**

6 Flavours

1 Sorbets

2 Plant Based



7 Flavours

1 Plant Based

Code	Product	Size	TLP	RRP
3273	Cookie Dough	12x100ml	£16.00	£2.00
1170	Choc Fudge Brownie	12x100ml	£16.00	£2.00
7153	Caramel Chew Chew	12x100ml	£16.00	£2.00
12954	Brookies & Cream	12x100ml	£16.00	£2.00
8341	Strawberry Cheesecake	12x100ml	£16.00	£2.00
9431	Vanilla	12x100ml	£16.00	£2.00
35999	Non Dairy - Cookie on Cookie Dough	12x100ml	£16.00	£2.00



SCAN ME  
TO FOLLOW  
CONSORT





SCAN ME TO FOLLOW CONSORT



SCAN ME TO FOLLOW CONSORT

# MINI TUBS

Code	Product	Size	TLP	EACH
42692	Vanilla	24x95ml	£31.10	£2.05
42615	Belgian Chocolate	24x95ml	£31.10	£2.05
63112	Strawberry & Cream	24x95ml	£31.10	£2.05
30383	Cookies & Cream	24x95ml	£31.10	£2.05
75069	Strawberry Cheesecake	24x95ml	£31.10	£2.05
36084	Salted Caramel	24x95ml	£31.10	£2.05



DON'T HOLD BACK

6 Flavours



Code	Product	Size	TLP	EACH
88337	Chocolate Fudge Brownie	24x110ml	£14.04	£1.60
79688	Marshmallow Cake	24x110ml	£14.04	£1.60

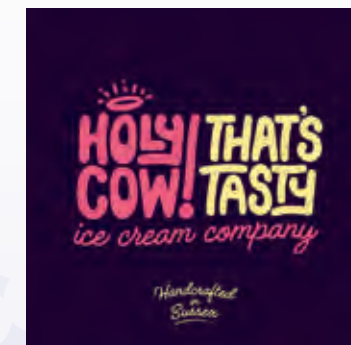


2 Flavours



# MINI TUBS

Code	Product	Size	TLP	EACH
81596	Vegan Strawberry & Hibiscous sorbet	12x120ml	£23.17	£3.30
41100	Vegan Mango Sorbet	12x120ml	£23.17	£3.30
51462	Vegan Chocoate	12x120ml	£23.17	£3.30
95936	Viva La Vanilla	12x120ml	£23.17	£3.30
39401	Rich Belgian Chocolate	12x120ml	£23.17	£3.30
44473	Salted Caramel	12x120ml	£23.17	£3.30
40808	Lemon Curd	12x120ml	£23.17	£3.30
48160	White Mint	12x120ml	£23.17	£3.30



8 Flavours

3 Plant Based

Handcrafted in Sussex





Healthy Alternative to Ice-cream



Did you know 70% of your dog's immune system is in their gut?



NEW FLAVOUR BANANA & HONEY

Ideal for cooling and soothing relief, Frozzy's is gentle on sensitive digestive systems and irresistibly tasty. Whether on a walk or at home, it's perfect year-round.



Why Choose Frozzy's:

- Happy Gut
- Lactose Free
- Low Calorie

Single Packs	RRP
28346 Banana & Honey	£2.25
60865 Blueberry	£2.25
24748 Original	£2.25
76201 Strawberry	£2.25

Pack Size: 24x85g (for all SKUs)  
TLP: £34.59 (for all SKUs)

STOCK UP ON A VARIETY OF FLAVOURS AND REQUEST A POS PACK TODAY TO ATTRACT HEALTH-CONSCIOUS PET OWNERS!

Jude's

Tail-waggingly delicious treats for our four-legged friends



Ice Cream for Dogs

Made using real fruit purées, Jude's Ice Cream for Dogs is a plant-based Strawberry, Apple, and Banana ice cream - available as a tub or a bone! Not only are they delicious, but they also support Battersea Cats and Dogs Home.



58387 Dog Strawberry, Apple & Banana  
12x90ml  
TLP £17.75  
RSP £2.50



TUBS TO GET TAILS WAGGING!

TLP £29.78  
RSP £2.10



- 4203 Vanilla
- 46530 Dog Mint



Scoop is our family farm dog who is always at our side so we thought it was about time she had a treat too!



Our dog-friendly ice cream is a supplementary feed for dogs with added specialist dog food supplements from GWF Nutrition



Tubs to get tails wagging, all produced sustainably on our British family farm

PAWBECK



Available now...  
A Tail-Waggingly Tasty Iced Treat For Dogs.

From the provenance of Purbeck Ice Cream

Packed with natural ingredients, our iced dog treat supports your pet's overall health and wellbeing. No artificial flavours, colours, or preservatives, formulated with ingredients that are gentle on your dog's stomach.







SCAN ME TO FOLLOW CONSORT



SCAN HERE FOR ALL YOUR EQUIPMENT & POINT OF SALE NEEDS

SCAN ME



Point of sale also available through Consort, speak to your telesales executive to have it added to your order today!



And much more!



SCAN ME TO FOLLOW CONSORT



Carpigiani 161K Shake Maker



Lease purchasing available from £194 + VAT per Month

The World's Most Advanced Counter Top Shake Maker

Approved Price: £8750 (+VAT)

The 161K is a space-saving countertop machine built specifically for shakes. Featuring advanced technology to ensure smooth, creamy textures, minimise maintenance and maximise production.

Self-Pasteurising (Up to 42-Day Cleaning Cycle) Extends the interval between deep cleans while maintaining hygiene

Tank Agitator Keeps the product evenly mixed for consistent texture

Hard-O-Tronic Precisely manages temperature for predictable, high-quality shakes

Direct Expansion Technology Shortens freeze times and improves product consistency

Shake Up Your Profits: Based on a 12 oz shake sold at £5.00:

Selling Price: £5.00 Less VAT (20%): £4.17 Product Cost: £0.60 Net Profit: £3.57 per shake

Annual Net Profit Projections: 10 shakes/day - £12,840 per year\* 25 shakes/day - £32,400 per year\* 50 shakes/day - £64,200 per year\*

Contact your rep for more details

\*Figures assume a standard 12 oz shake with consumables, trading 360 days/year.

\*\*Finance available to businesses trading 3+ years with a £500 + VAT deposit on a 5-year term. Subject to status; additional fees may apply.



## TERMS AND CONDITIONS (a summary)

### Conditions of Sale

1. All products supplied will be at our standard list price plus VAT where applicable.
2. We reserve the right to alter prices without notification.
3. Payment will be on a cash on delivery basis unless otherwise agreed (see payment terms below).
4. No products are supplied on a sale or return basis.
5. All goods are offered subject to availability – please check with your local Consort office.

### Pricing

1. Pricing of products is as stated in the current brochures and on the [consortfrozenfoods.co.uk](http://consortfrozenfoods.co.uk) website.
2. All prices are exclusive of VAT, shipping costs unless otherwise stated.
3. Consort retains the right to revise prices at any time with reasonable notice.

### Payment terms

1. Credit terms will only be provided upon completion of a credit account application and are subject to credit and trade references. All orders placed prior to the approval of a credit account will be on a cash on delivery basis.
2. All Credit Accounts must be settled within 20 days from the end of the month in which the invoice was raised.
3. If payment is not made in accordance with point 2 above, the Company reserves the right to charge Statutory Interest on the overdue balances for the period from the date on which payment became due until the date on which payment is made including any period after the date of any judgement or decree against the Customer.
4. Consort Frozen Foods Ltd reserves the right in its absolute discretion to refuse to grant credit.

### Delivery

1. Deliveries of Products to the Customer shall be in accordance with the Company's delivery schedule. The Company shall not be liable for any loss or damage whatsoever arising because of a delay or failure to deliver Products by a particular date or a particular time on a particular date unless otherwise agreed between the company and the Customer or arising because of any cause beyond the Company's control, including any force majeure event or the Customer's failure to provide adequate delivery instructions. Time for delivery shall not be of the essence.
2. Delivery of Products shall be made by the Company to a reasonably accessible location at the Customer's premises, or as otherwise agreed between the parties ("the Delivery Location"). The Customer shall allow the Company access to such premises and shall use best endeavours to ensure that a responsible person shall be at the place of delivery to take delivery of the Products and to sign for them. If such a person is not present at the time of delivery the Customer hereby consents to the Company not leaving the Products at the Delivery Location.
3. The customer is responsible for providing accurate delivery information and ensuring the availability of personnel to receive the products.
4. Risk of loss or damage to the products passes to the customer upon delivery.

### Acceptance and Claims Procedure

1. The Customer must check that the quantity and specifications of Products delivered upon receipt and that they correspond with the order placed, before signing for the delivery.
2. Consort reserves the right to accept or reject any order at our own discretion.
3. Claims in respect of short deliveries or damage to Products reasonably visible on inspection must be made to the Company within 24 hours of the time of the delivery which gives rise to the claim. The Customer must retain damaged Products for inspection and collection. Credit will only be granted by the Company if the provisions of this Condition are complied with.

### Warranties

1. The Company warrants that all Food Products shall comply with the Food Safety Act 1990 and all relevant UK legislation in force at the time of delivery. The Company warrants that all Non-Food Products shall comply with all relevant UK legislation in force at the time of delivery.
2. The Company gives no warranties in respect of the Equipment. The Company will, to the extent that it is able, make available to the Customer the benefit of any warranties or guarantees relating to the Equipment obtained from the manufacturer thereof.
3. The Customer shall ensure that no Food it purchases from the Company is sold (or otherwise distributed) after any 'best-before' or 'use-by' dates included on the Products or their packaging. To the extent any Food is sold (or otherwise distributed) by the Customer after any such date, it shall be at the Customer's sole risk, and the Customer shall compensate and hold the Company harmless against any losses, claims, expenses, or damages it incurs howsoever relating to the same.

### Errors/Omissions

Every effort has been made to ensure the accuracy of this brochure; however, mistakes may occur, no liability is accepted by the company for changes or errors.

### Data Protection

Customers purchasing products from Consort Frozen Foods Ltd should note that by placing orders they will be taken to have authorised Consort Frozen Foods Ltd to use data provided to them: by such retail outlets or customers in the course of trading with Consort Frozen Foods Ltd and in accordance with trading terms or payment arrangements: to advise retail outlets or customers of product offers, to offer this information to other reputable companies organisations or persons who wish to offer the products of such reputable persons or the promotions or services of Consort Frozen Foods Ltd to such retail outlets or customers. If retail outlets or customers do not wish Consort Frozen Foods Ltd to use their details or data in this way, they may notify Consort Frozen Foods Ltd in writing to: Consort Frozen Foods Ltd, Consort Way, Burgess Hill, West Sussex, RH15 9TJ.

For a full list of our Terms & Conditions please email [info@consortfrozenfoods.co.uk](mailto:info@consortfrozenfoods.co.uk) or call **01444 870111**



# MEET YOUR CONSORT TEAM!

Here at Consort we know a thing or two about frozen food and ice cream, after all we have been serving our customers since 1987.

We work with brand leaders and suppliers to offer a wide range of the best products within the convenience retail sector.

Our range includes Pizzas, Ready meals, Chips, Desserts, Impulse Ice Cream, Take home, Multipacks and so much more.

We have market leading equipment deals on freezers, slush & shake machines to name just a few.

## Keep in contact with your area rep via...



WhatsApp



Phone



Email



Text



### Dean Hanson

dean@consortfrozenfoods.co.uk

07790 901999

Sales & Marketing Manager



### Andy Wiltshire

andy.wiltshire@consortfrozenfoods.co.uk

07964 059271

BN7-10 & 20-27, RH7-9 & 18-19, TN1-22, 26-40



### Ricky Daley

Ricky.daley@consortfrozenfoods.co.uk

07815 701924

KT, SW & TW (ALL)



### Julie Stevens

julie@consortfrozenfoods.co.uk

07817 535009

BN12,13,16,17 & 18, GU26-35, PO & SO (ALL)



### Karen Blazdell

Karen.blazdell@consortfrozenfoods.co.uk

07720 421074

GU 1-25, 46,47,51 & 52, RG (ALL), RH1,2 & 4, SL4-6, OX (ALL)



### Simon Renton

simon.renton@consortfrozenfoods.co.uk

07971 797260

National Account Wholesale Manager

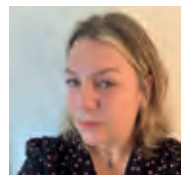


### Phil Hogston

phil@consortfrozenfoods.co.uk

07801 124075

DA (ALL) BR (ALL) SE(ALL)



### Michelle Wretham

michelle@consortfrozenfoods.co.uk

07376 364139

CT & TN23-25  
ME (ALL)



### Ben Prout

ben.prout@consortfrozenfoods.co.uk

07801 473482

BN1-3, 5-6, 11,14,15 &41-45, RH3,5 &6, 10-17 & 20



### Russell Mason

russell@consortfrozenfoods.co.uk

07801 473487

SM & CR